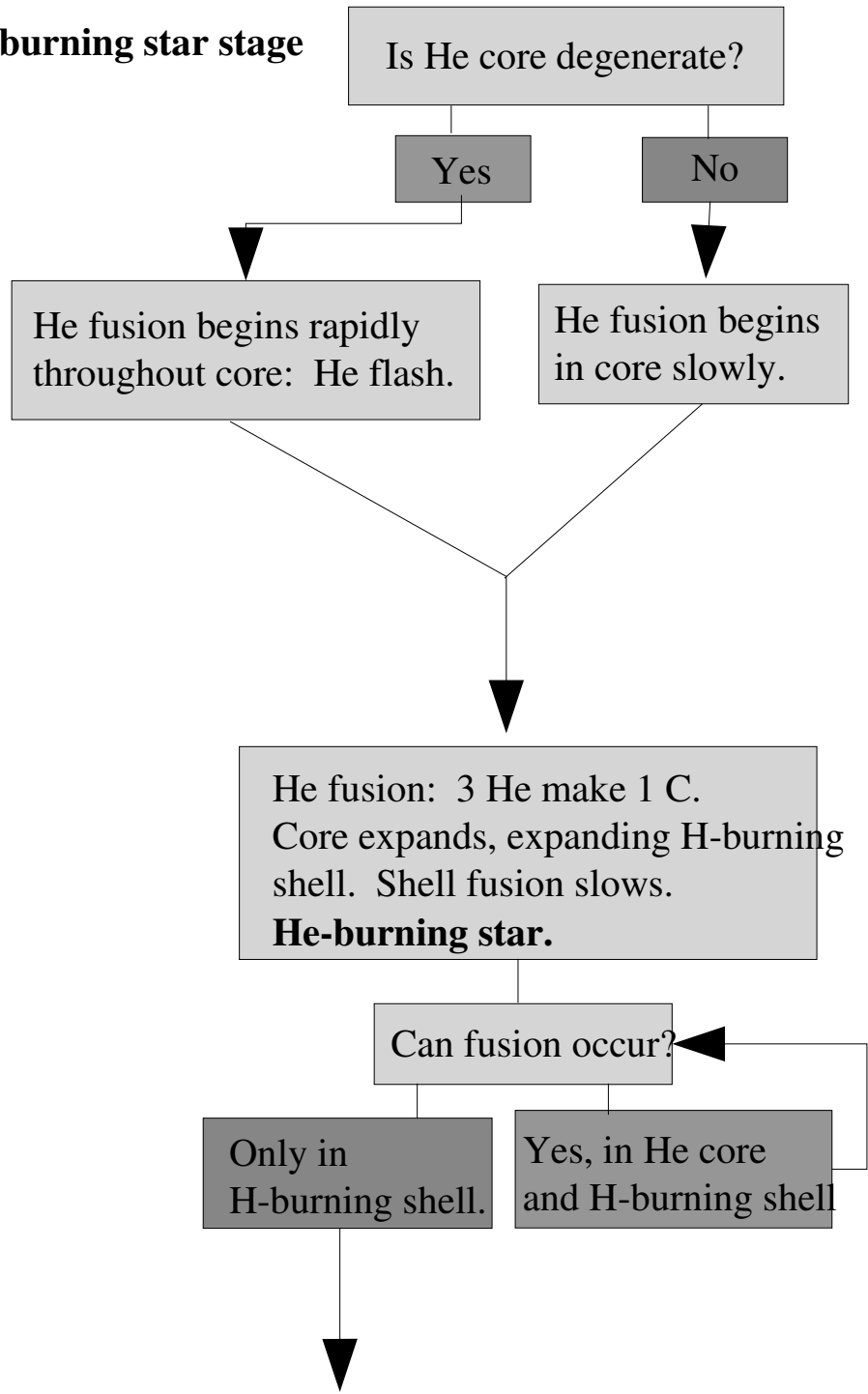


He-burning star stage



**double shell-
burning red
giant stage**

Gravity crushes C core and He-burning shell smaller. Outer layers expand. Can fusion occur?

Yes: in H-burning shell and in He-burning shell beneath.

Only in H-burning shell.

H-burning shell adds He to He-burning shell. He-burning shell adds C to core.

Gravity crushes core and 2 shells smaller. Outer layers expand. Dust created. Can fusion occur?

No, core shrinks so much that shells and outer layers are blown away.

Yes, in 2 shells.

White dwarf inside planetary nebula.