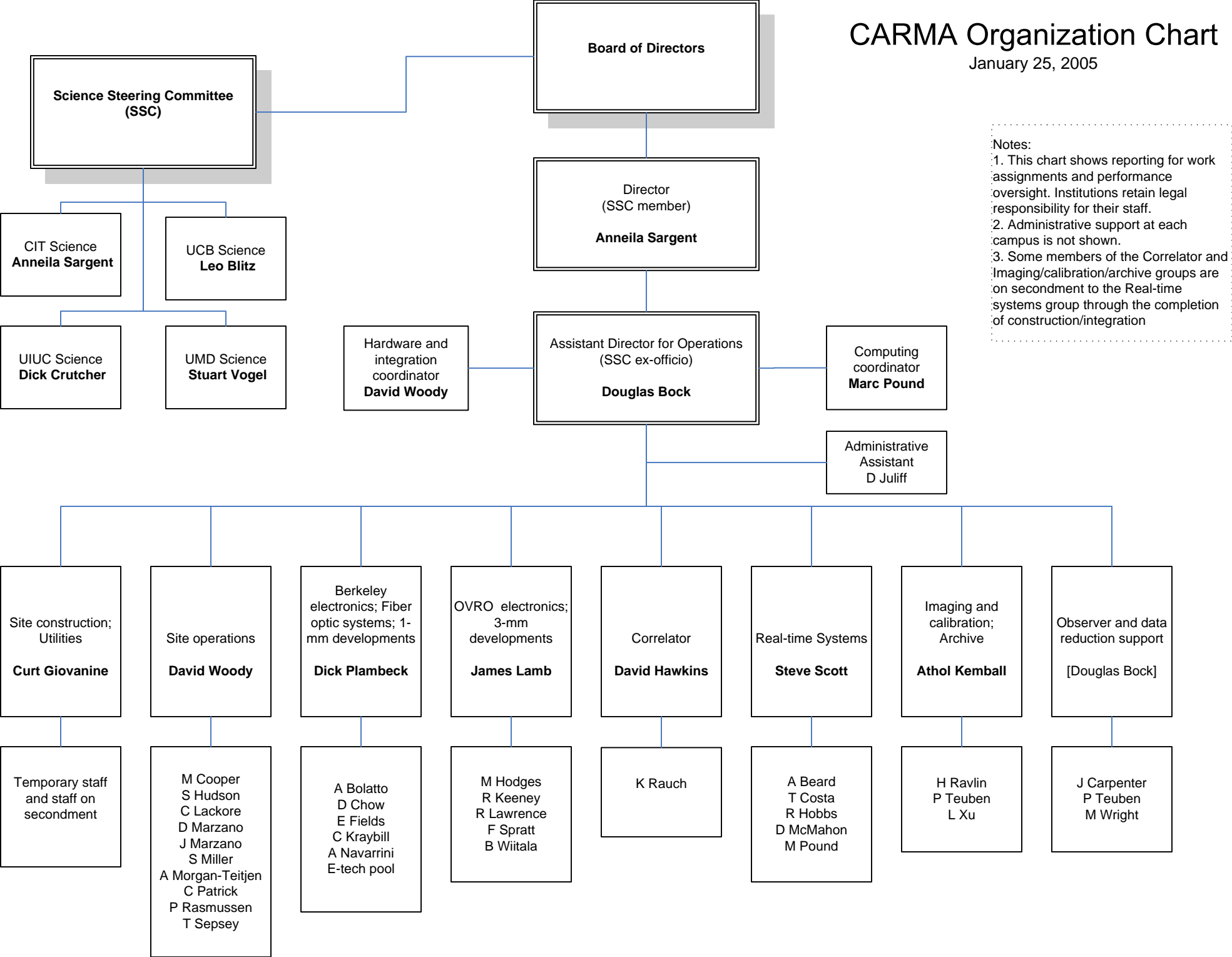


CARMA Organization Chart

January 25, 2005



Notes:

1. This chart shows reporting for work assignments and performance oversight. Institutions retain legal responsibility for their staff.
2. Administrative support at each campus is not shown.
3. Some members of the Correlator and Imaging/calibration/archive groups are on secondment to the Real-time systems group through the completion of construction/integration