

coord 14:38:55.44 36:18:40.8 (ICRS, J2000, 2000.0), radius: 15 arcsec

other query modes :

- Identifier query
- Coordinate query
- Criteria query
- Reference query
- Basic query
- Script submission
- TAP
- Output options
- Help

Query : coord
 14:38:55.44 36:18:40.8 (ICRS, J2000, 2000.0), radius: 15 arcsec

C.D.S. - SIMBAD4 rel 1.6 - 2018.03.14CET03:30:57

Available data : [Basic data](#) • [Identifiers](#) • [Plot & images](#) • [Bibliography](#) • [Measurements](#) • [External archives](#) • [Notes](#) • [Annotations](#)

Basic data :

TYC 2560-1093-1 -- Star

Distance to the center *arcsec*: 0.06

Other object types: * (TYC,Gaia,...), IR (2MASS)

ICRS coord. (*ep=J2000*) : 14 38 55.4398 +36 18 40.863 (Optical) [0.175 0.127 0] A 2016A&A...595A...2G

FK5 coord. (*ep=J2000 eq=2000*) : 14 38 55.440 +36 18 40.86 [0.175 0.127 0]

FK4 coord. (*ep=B1950 eq=1950*) : 14 36 52.94 +36 31 34.8 [33.801 25.850 0]

Gal coord. (*ep=J2000*) : 061.6150 +65.4703 [0.175 0.127 0]

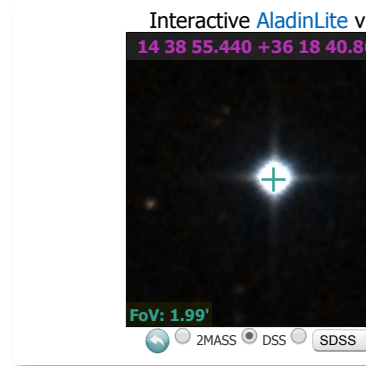
Proper motions *mas/yr* : 16.123 -9.471 [0.517 0.676 90] A 2016A&A...595A...2G

Parallaxes (*mas*): 2.45 [0.25] A 2016A&A...595A...2G

Fluxes (6) :

B	11.41	[0.06]	D	2000A&A...355L...27H
V	10.76	[0.05]	D	2000A&A...355L...27H
G	10.429	[0.001]	C	2016A&A...595A...2G
J	9.402	[0.020]	C	2003yCat.2246...0C
H	9.077	[0.016]	C	2003yCat.2246...0C
K	8.989	[0.017]	C	2003yCat.2246...0C

SIMBAD with radius



VizieR [photometry view](#)

within radius

Identifiers (4) :

An access of full data is available using the icon VizieR near the identifier of the catalogue

- TYC 2560-1093-1 
- Gaia DR1 1486230105150718976 
- GSC 02560-01093 
- 2MASS J14385544+3618408 

Plots and Images

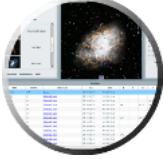


plot

radius arcmin



CDS portal




CDS Simplay
(requires flash)



Aladin applet

References (0 between 1998 and 2018) (Total 0)

Simbad bibliographic survey began in 1850 for stars (at least bright stars) and in 1983 for all other objects (outside the solar system).

 Follow new references on this object

Reference summaries :

from: to:

or select by : (not exhaustive, [explanation here](#))

Collections of Measurements

 PLX : 1[display selected measurements](#)[display all measurements](#)[clear](#)

External archives :

Link by name to the catalogue in [VizieR](#) :

[TYC 2560-1093-1](#)[Gaia DR1 1486230105150718976](#)[GSC 02560-01093](#)[2MASS J14385544+3618408](#)

Search by coordinates in [Vizier](#) (radius: 5 arcsec)

Annotations :

Annotations allow a user to add a note or report an error concerning the astronomical object and its data. It requires registration to post a note. See [description](#) .

The list of all annotations to SIMBAD objects can be found [here](#) .

Currently no annotations available

[add an annotation to this object](#)

[report an error concerning the data of this object](#)

Store this result in [Votable](#), in [Ascii](#), or in the [CDS portal](#)

View this query in [SQL-like \(TAP\)](#)

To bookmark this query, right click on this link: [simbad:coo=14:38:55.44 36:18:40.8,rad=15 arcsec](#) and select 'bookmark this link' or equivalent in the popup menu
